

DC NET APPLICATION SUITE

Finally, a single cost effective solution for all your Labor requirements...

DC Net Application Suite

"Take Charge of tracking vital data"

DC Net is an easy to use, PC based data collection application. Designed to provide seamless integration, DC Net provides a bridge between IBM data collection terminals and a variety of labor management applications including Time & Attendance, Labor Reporting, and security Access.

DC Net Data Collection

"Configure it and forget about it"

DC Net is a Windows PC based connectivity platform designed to collect real-time data from IBM data collection terminals or time clocks and provide a seamless interface to standard customer applications. DC Net offers real time communications by continuously polling active terminals over the network. Initially, DC Net is used to configure terminals on the network; once configured the system provides on screen monitoring of data and the ability to download changes to the terminals. The system is designed to be simple to configure and require minimal attention or simply stated "configure it and forget about it" Once configured the polling engine is designed to operate unattended.

System at a Glance

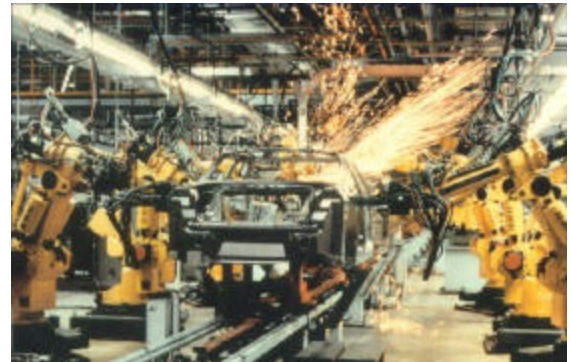
"Search no further, DC Net provides supervisors with access to immediate employee information."

Knowledge is power and having current accurate information is a requirement in today's demanding work places. There is no need to guess, DC Net combined with application suite provides medium and large companies with robust real-time frame-work to accurately acquire valuable employee or production information.

Application Suite

"One solution for all your data collection requirements".

Application Suite is a series of proven applications developed to collect and organize labor information for payroll, costing, providing security access, and reporting all sorts of vital information necessary to provide management and HRS accurate data required to make informed decisions. Standard modules include Time & Attendance, Labor Tracking & Costing, Security Access, Bell Control, Inventory Control, and Production Control. Advanced features are offered to handle the most demanding environments. Managers can purchase a single module and add future modules as required. Since



the modules have a seamless interface, adding additional modules is easy and the need to duplicate efforts is eliminated. Application suite offers "one solution for all your data collection requirements".

Time & Attendance

The T&A module used in conjunction with IBM electronic time clocks provides management with a secure and accurate information necessary for payroll. The system allows you to quickly and easily setup benefit schedules, company schedules, department schedules, and employee schedules.

Screens are provided to allow supervisors to correct any invalid punches before they are forwarded through the payroll process.

Vacation time, benefit hours and pay changes are automatically calculated. Job costing can be added to extract the hours collected against a job.

Standard Features:

- * Master files for Employees, Supervisors, Benefits and departments
- * Company, Department, Cost Center, and individual employee Schedules
- * Simplified Supervisor review and modification of employee data by Department or Cost Center.
- * Suspect data automatically flagged for supervisor exception report
- * Accumulated hours, Benefits, and overtime hours formatted for standard payroll services (ADP, Paychecks, Mapics, SAP) or customer requirements
- * Over a dozen of the most popular reports including:
Accumulated Time, Missing Punch, On Premise, Actual Clock In/Clock Out, Employee Vacation, Employee Holiday Eligibility, Employee Master file

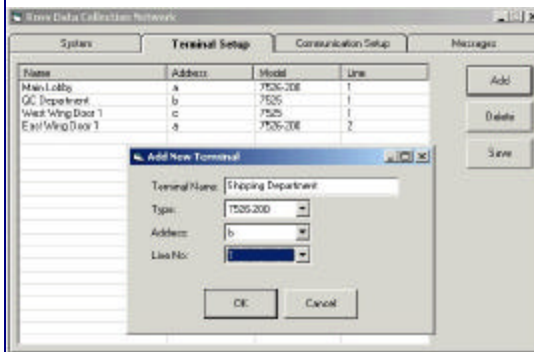
Special points of interest:

- * "Real-Time" electronic data collection
- * Organizes vital information into reports
- * Labor and HRS management resource
- * Accurate & timely information to allow Supervisors to make informed decisions
- * Standard or custom Reports/Inquiry

Labor Reporting

"Determine your true labor costs"

The Labor Reporting module allows you to



"Labor... your companies most valuable resource."



quickly and easily determine your companies true labor costs, who is working on it, and what's the status of the job. Jobs can easily be tracked and monitored from start to completion.

Labor Reporting provides screens to allow supervisors to correct any invalid data before transactions are released. Accumulated data can be stored on the network or immediately forwarded to a host.

Direct labor, indirect labor, quantity good & bad, set-up/off, crew on/off, machine up/down monitoring, notification of downtime, quality inspection, scrap, order status are just some of the features of Labor Reporting for DC Connect.

Standard Features:

- * Job on, Job off
- * Quantity produced
- * Quantity scrapped
- * Direct/Indirect Labor
- * Setup on/off
- * Production reporting adjustments
- * Over a dozen of the most popular reports including; accumulated costs by job, department or cost center, current job status, reason codes, employee master files, Open jobs, and closed jobs or work orders.

Advanced Features

- * WIP (work in process) tracking
- * Machine monitoring
- * Quality inspection
- * Real-time employee job status
- * Audit trail of changes
- * Shop order/work order status
- * Crew clocking by department or work center

Security Access

"Proactively monitor and control access to your facility"

The Security Access module allows management to grant and prohibit access to electromechanically controlled doors & gates throughout the facility. Doors can be grouped into zones for easier management. Employees can be grouped into departments to facilitate establishing a schedule of employee access based on an individual or department shift. Reports are provided to collect all building access activity. The software provides an intuitive interface designed to provide relevant information fast.

Standard Features

- * Control and monitor doors electronically
- * Establish Zones
- * RF badges for enhanced security
- * Local and remote validation
- * Time & badge based authorization
- * Authorization by department, work center or individual work schedules or permissions
- * Over a dozen standard reports including; on premise, activity by zone or department or individual or all

System Requirements

Pentium III 1G MHZ Processor or higher
 256MB RAM, 20MB HD, CD ROM
 Windows 2000/XP Stand-alone (5 users)
 IBM Transaction Connection & Client Access for host connectivity
 Windows 2000 Server & MS SQL Server 2000
 For enterprise networked environment.



ROSS
 TECHNOLOGIES

4387 36th Street
 Orlando, FL 32811
 Phone: 407-872-0874
 Fax: 407-872-0791
 Email: pq@rossdatasys.com
 Web Site: www.rossdatasys.com