

DC NET APPLICATION SOLUTIONS

Real-time communications platform for web based terminals & IBM DCTs.



At a Glance

"Real-Time" electronic data collection

Organizes vital information into reports

Labor and HRS management resource

Accurate & timely information to allow Supervisors to make informed decisions

Standard or custom Reports/Inquiry

DC Net Application Suite

"Take Charge of tracking vital data"

DC Net is an easy to configure, PC based connectivity platform builder that provides seamless integration, between data collection terminals and a variety of vital applications including Time & Attendance, Labor Reporting, security Access and wireless inventory management. It can interface directly to a SQL data base or AS-400.

DC Net Data Collection

"Configure it once"

Once configured the connectivity platform communicates real-time to CE.net device as well as IBM data collection terminals and provide seamless integration to customer applications. DC Net offers real time communications using web based templates to CE.net terminals or continuously polling 7526 terminals over the network. Once configured the system provides monitoring of data with the ability to download changes to the terminals. The system is simple to configure and require minimal attention. Once configured the polling engine is designed to operate unattended.

Vital Real-time information

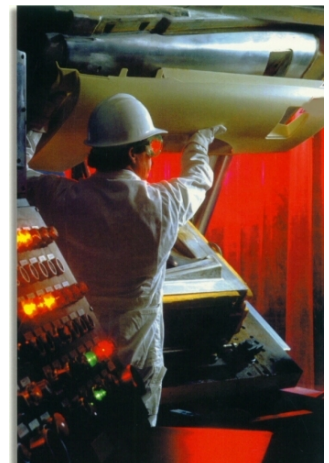
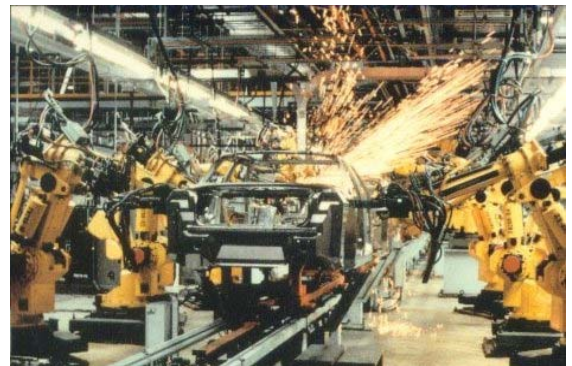
"Search no further, DC Net provides supervisors with access to immediate information."

Knowledge is power and having current accurate information is a requirement in today's demanding work places. There is no need to guess, DC Net combined with application suite provides medium and large companies with robust real-time frame-work to accurately acquire valuable employee or production information.

Application Solutions

"Solution for all your data collection requirements".

Application Solutions is a series of proven applications developed to collect and organize information for payroll, costing, security access, warehouse management and all sorts of vital information necessary to provide management and HRS accurate data required to make informed decisions. Standard modules include Time & Attendance, Labor Tracking & Costing, Security Access, Bell Control, Inventory Control, and Production Control. Custom features are offered to handle the most demanding requirements. Purchase a single module and add future modules as required. Since the modules have a seamless interface, adding additional modules is easy and the need to duplicate efforts is eliminated. Application solutions offers "Solutions for all your data collection requirements".





*“Real-time
information... providing
your companies with
accurate information to
make informed
decisions.”*



Time & Attendance

The T&A module used in conjunction with IBM electronic time clocks provides management with a secure and accurate information necessary for payroll. The system allows you to quickly and easily setup benefit schedules, company schedules, department schedules, and employee schedules.

Screens are provided to allow supervisors to correct any invalid punches before they are forwarded through the payroll process.

Vacation time, benefit hours and pay changes are automatically calculated. Job costing can be added to extract the hours collected against a job.

Standard Features:

- * Master files for Employees, Supervisors, Benefits and departments
- * Company, Department, Cost Center, and individual employee Schedules
- * Simplified Supervisor review and modification of employee data by Department or Cost Center.
- * Suspect data automatically flagged for supervisor exception report
- * Accumulated hours, Benefits, and overtime hours formatted for standard payroll services (ADP, Pay-checks, Mapics, SAP) or customer requirements
- * Over a dozen of the most popular reports including;

Accumulated Time, Missing Punch, On Premise, Actual Clock In/Clock Out, Employee Vacation, Employee Holiday Eligibility, Employee Master file

Standard Features:

- * Job on, Job off
- * Quantity produced
- * Quantity scrapped
- * Direct/Indirect Labor
- * Setup on/off
- * Production reporting adjustments
- * Over a dozen of the most popular reports including; accumulated costs by job, department or cost center, current job status, reason codes, employee master files, Open jobs, and closed jobs or work orders.

Advanced Features

- * WIP (work in process) tracking
- * Machine monitoring
- * Quality inspection
- * Real-time employee job status
- * Audit trail of changes
- * Shop order/work order status
- * Crew clocking by department or work center



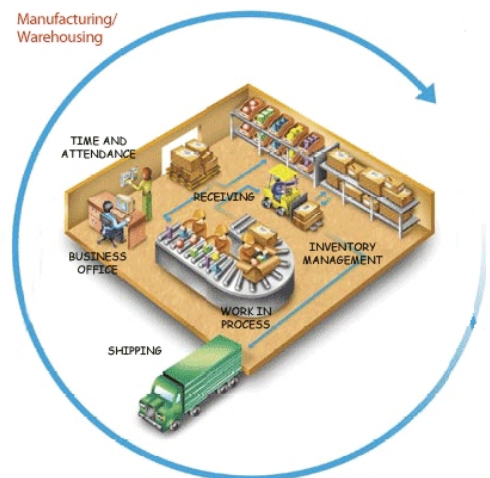
Labor Reporting

“Determine your true labor costs”

The Labor Reporting module allows you to quickly and easily determine your companies true labor costs, who is working on a job, and what's the status. Jobs can easily be tracked and monitored from start to completion.

Labor Reporting provides screens to allow supervisors to correct any invalid data before transactions are released. Accumulated data can be stored on the network or immediately forwarded to a host.

Direct labor, indirect labor, quantity good & bad, set-up/off, crew on/off, machine up/down monitoring, notification of downtime, quality inspection, scrap, order status are just some of the features of Labor Reporting for DC Connect.



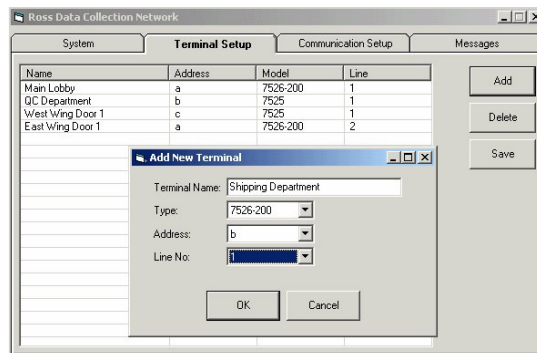


*“Securing your facility
for authorized
personnel”*

Security Access

“Proactively monitor and control access to your facility”

The Security Access module allows management to grant and prohibit access to electromechanically controlled doors & gates throughout the facility. Doors can be grouped into zones for easier management. Employees can be grouped into departments to facilitate establishing a schedule of employee access based on an individual or department shift. Reports are provided to collect all building access activity. The software provides an intuitive interface designed to provide relevant information fast.



Standard Features

- * Control and monitor doors electronically
- * Establish Zones
- * RF badges for enhanced security
- * Local and remote validation
- * Time & badge based authorization
- * Authorization by department, work center or individual work schedules or permissions
- * Over a dozen standard reports including: on premise, activity by zone or department or individual or company

HID readers and HID badges are offered for new installations. Often existing badges can be used.

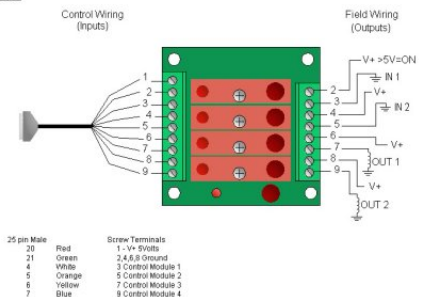


Break Bell Control

“Automatically fires the break bell to synchronize with start & end of break and lunch periods”

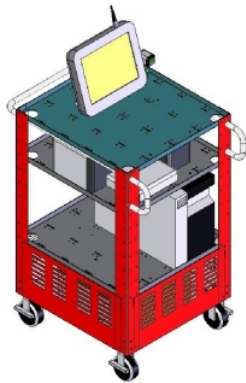
Production lines and many manufacturing operations can benefit from a consistent scheduled system of firing break bells. Often it is very important that the lines or departments stop and start work together during break or lunch periods. Bell control can provide a simple method that allows supervisors the ability to configure the start and duration of 4 to 8 independent bells/horns per terminal. A digital output module is attached to the terminal and a fire signal is applied to the audible alarm. Tones or discrete bells can be used. Often existing paging system already have tone features that can be utilized for this function.

**Opto 22
G4PB4
Connection**





“Real-time information... providing your companies with accurate information to make informed decisions.”



SmartCart providing on demand wireless printing

Wireless Warehouse Management

Track inventory movement from the moment it enters the building till the completed assembly is shipped out the door.

Standard Template functions

- Receiving to location (controlled)
- Receiving (uncontrolled)
- Physical inventory (counting)
- Inventory movement
- Warehouse transfer
- Picking against order
- Ship complete
- Ship partial
- Item location
- Order item confirmation
- Logging on & off

Available Reports

- Item list
- Item location and quantity
- Items received
- Items shipped
- Items against order
- Order status
- Transactions by Badge ID
- Inventory movement
- Shipping log
- Shipping method

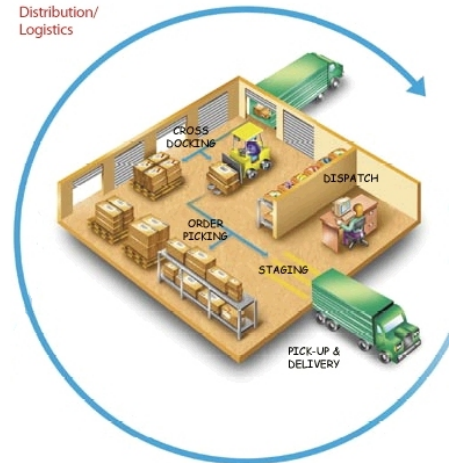
Knowing where your inventory is at all times is critical. RTG can help by providing the best combination of hardware and software solutions to achieve this goal. Wireless Warehouse Data Connection (WWDC) provides a cost effective, full function solution. The software is scalable to provide the level of integration required by your organization. Whether your need is for a complete warehouse management solution or to provide wireless freedom to your existing system, we can accommodate your unique requirements. Each design is evaluated and optimized based on your specific needs.

There is an old saying “The more you know about your inventory the less you need it”. Wireless systems boast of a very short ROI with accuracies of 95% to 98%. Not only is the data more accurate but there is often an increased in employee productivity. Just a small increase in inventory accuracy and productivity can result in a significant financial gain. RF terminals empowers your employees with the information they need to perform efficiently. Real-time data allows, management to review reports that provide the details required to make quickly and well informed decisions. Tracking and recording inventory movement more accurately and efficiently in a warehouse effects the bottom line. Making employees more effective, validating

each transaction, increasing accuracy through bar-coding, and providing real-time data are some of the advantages . A healthy business depends on a well run warehouse.



Distribution/
Logistics



System Minimum Requirements

Pentium III 1G Mhz Processor or higher
256MB RAM, 20MB HD, CD ROM
Windows 2000/XP Stand-alone (5 users)
IBM Transaction Connection & Client Access
for host connectivity
Windows 2000 Server & MS SQL Server 2000
For enterprise networked environment.



Ross Technologies Group, LLC

4387 36th Street
Orlando, FL 32811
Phone: 407-872-0874
Fax: 407-872-0791
Email: pq@rossdatasys.com
Web Site: www.rossdatasys.com